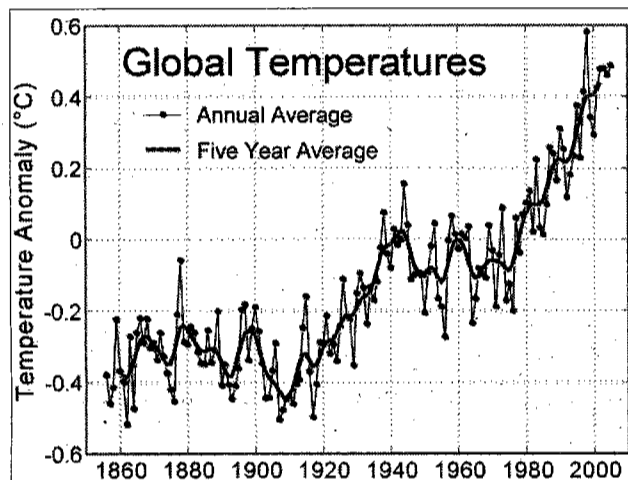




Tyler Mahoney/The Spectator

The vast consumption of gasoline within the United States not only affects our pocketbooks, but also the air we breathe.



This graph charts the global temperature anomaly, the difference between the "average" global temperature and the actual recorded surface temperature.

Earth Week: Caring for Creation

April 20: Biodiesel – A present from our past to fuel us into the future

Ravi Mikkelsen, president of TruDiesel Fuels, will discuss biodiesel's pros and cons, market size and its role in the upcoming oil crisis.

12-1 p.m. in the Pigott Auditorium

April 20: Dr. Seuss's *The Lorax*

A ruined industrialist tells his tale of environmentally self-destructive greed despite the warnings of an old forest creature called the Lorax.

6-8 p.m. in the Lemieux Library Shafer Auditorium

April 21: Pesticide Free Landscaping

Tour SU's gardens with Janice Murphy, SU's Organic Landscape Management Coordinator. (Outside event – dress for the weather)

12-12:45 p.m. meet at the Student Center Patio

April 22 (Earth Day): Duwamish River Clean-up

Help clean up our hometown river at one of five restoration sites.

To join in contact Robin Clark:

rclark@pugetsound.org or (206) 382-7007 ext. 209

April 28: Ethnobotanical Garden Dedication

Join Puget Sound area First Peoples at a salmon bake to dedicate SU's new Taqwsheblu Ethnobotanical garden.

3-5 p.m. STCN LeRoux Room

SU Fuel Conservation Challenge!

How much gasoline can our campus conserve during Earth Week? To participate, walk, bike, bus or carpool to and from SU at least one day of the week. Then answer a 4 question survey at <http://www.seattleu.edu/scieng/cee/earthweek/conserve/>

'Earth Week' hopes to increase students' awareness, action

William Crane

cranew@seattleu.edu

When most Americans see the banners and flyers announcing local Earth Day and Earth Week events, they still don't see environmental issues, such as global warming, in the same light as scientists and environmental activists.

A recent poll jointly conducted by the ABC network, Time magazine and Stanford University reported that a full 85 percent of the public believed that climate change is taking place. However, 54 percent saw global warming as a problem for the future and 64 percent believed there was major disagreement by scientists on the causes of global warming.

"Organized people are confusing the public. Humans are having an impact [on the environment]," says David Brubaker, associate professor of biology. "If you do agree on this, then you have a moral obligation to do something about it."

This is part of the reason why "Earth Week: Caring for Creation" has a variety of events across the Seattle University campus. The events hope to spread awareness that these major environmental issues are not only dealt with through legislation and government action, but can be changed through the actions of ordinary citizens.

Like the recent national poll, perspectives and awareness of environmental issues vary across campus. However, unlike the poll, most SU students agree that climate change is taking place and is caused at least in part by human actions.

"If nothing else, Earth Day gives people a chance to open up their minds about the state of the environment as the day was meant to do when established," says Lauren Cowley, a sophomore ecological studies major. "I hope that, soon, people can become aware of what's really going on and how detrimental we are to our environment."

The "Earth Week" events are meant to create willingness for change and a general awareness of the seriousness of these issues. They range from movies like Dr. Seuss' *The Lorax*, a story about the conflict between the environment and industrialism, to a talk about America's oil dependence. The first event was a socially-conscious lunch, which aimed to prepare a waste-free, non-meat meal.

Because it is located in Seattle, the university can look to the city's lead to institute the internationally-recognized Kyoto Treaty among U.S. cities and their superior recycling program. These programs show that many Seattleites are aware of environmental issues and are willing to take action for change.

It may seem that students at Seattle University are more aware of environmental issues given the activist nature of the city and the university, but this is not always the case. Many are aware of the issues, but unaware of their true context.

"There are a lot of people who seriously don't think that it is a big deal, that they can't change anything, or that it isn't really happening. If there was more awareness I think that we could at least slow down the global warming, even though we wouldn't be able to stop it," says Leslie Dunham, junior biology major.

According to the Environmental Protection Agency (EPA), the United States emits more greenhouse gases than any other nation. While not all emissions are caused by individual citizens, people should be aware of the impact they do have upon the global climate.

"It is real; it is happening as we speak," says Rocky Horan, sophomore nursing major. "Without cutting back emission output we will continue to see the warming of the planet."

Many times the issue of global warming and climate change gets lost in the daily news or becomes part of a politicized debate. It can simply become yet another problem absent of real context for the viewer. When this occurs, these issues are only spoken about, but not acted upon.

"Some people are stuck on the issue rather than the symptoms that cause it," says Madeleine Hottman, junior public affairs major.

When issues of global warming are looked at from the perspective of what one personally contributes to this problem, one can see his or her role in the larger issue.

While none of the events in "Earth Week" specifically deals with the larger issue of global warming, they are meant to call students to action by focusing on important environmental is-

ues that are smaller in scope, but more relevant to the average college student.

"We want to take it out of the abstract," says Jennifer Soresen, visiting assistant professor of chemistry.

Brubaker also explained that events were chosen in order to attract students to attend. While this is the first year that Earth Week events are taking place, there have been Earth Day events in past years. Brubaker hopes that expanding the event to a whole week will make students feel more able to participate.

However, while most students agree with the benefits these events have for awareness, not all agree that it is actually making an impact.

"The only reason we know it is Earth Day is because the front of the newspaper has 4th graders drawing a picture-perfect world with finger paint on a wall at the local elementary school," says Scott Brothers, junior criminal justice major.

Brothers also adds that he was unaware of the campus events celebrating Earth Week and would only attend if they fit with his daily schedule.

Many students agree that while global warming is a pressing issue, placing more attention on its causes will allow for a greater resolution of the overall problem, since the issue of global warming has become a highly saturated issue.

"There are easy solutions, but they haven't been taken, like cutting car and factory emissions," says Adrienne Hawley, senior journalism major.

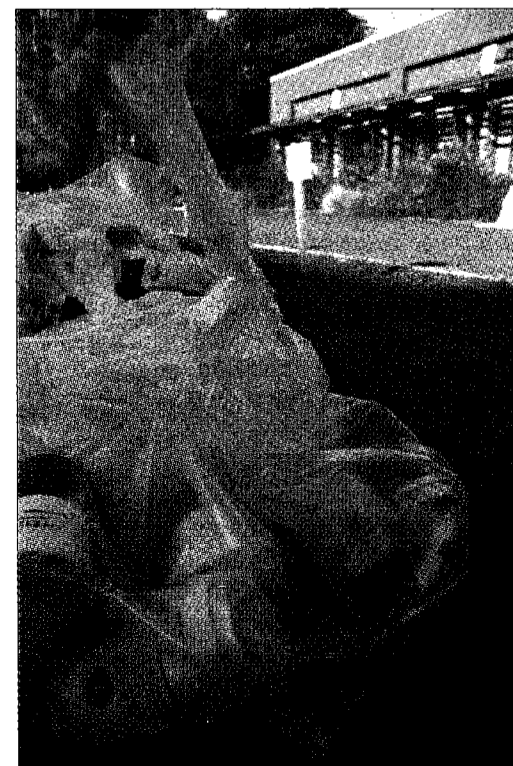
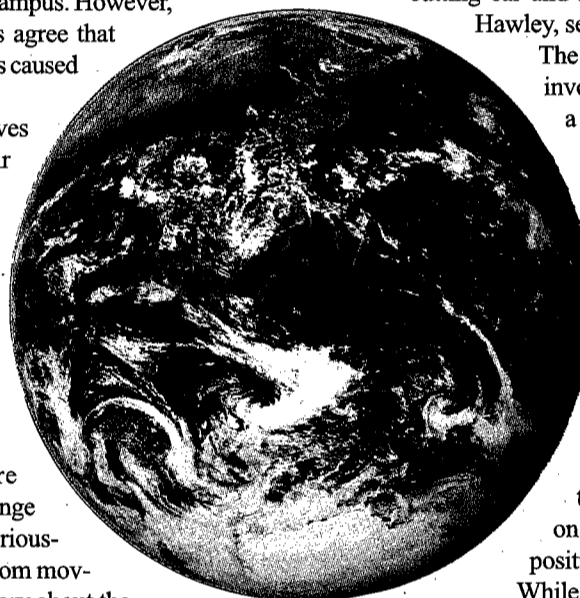
The other prevalent reason for lack of involvement in environmental issues is a sense of helplessness, since many students are unaware that they can make a difference.

"Environmental issues are not the kind of thing that people research on their own time but is interesting to many people; so much can be learned from activities during Earth Day/week," says Dunham.

Brubaker explained that Earth Week's events are meant to show that people do have a direct impact on their environment, but can have a positive effect if they see this impact.

While student participation in events such as Earth Week is not as strong as many hope, the goal of such events is to bring awareness. Not so much awareness of large, complex issues like global warming and climate, but rather smaller issues such as gas emissions, trash production and food consumption.

The hope is that through illuminating these issues, students will find that they are too indebted to the protection of the world they live in.



Tyler Mahoney/The Spectator

One trash bag out of 66 in a display outside Lemieux Library. It showed the waste people at Seattle University create in one week.

Illuminating the problem of light pollution

Jennifer Willden
willdenj@seattleu.edu

As Earth Day approaches, most people focus on reducing consumption, recycling more and polluting less, but few imagine trying to regain a starry night view as beneficial to the environment.

However, in recent years it has become nearly impossible to see a starry night in or around Seattle, an occurrence that is negatively affecting our region and its residents. This lack of star viewing possibilities is due to the dramatic increase in light pollution in Seattle and many other cities.

The American Heritage Dictionary defines light pollution as the "illumination of the night sky by electric lights, as in an urban area, that interferes with astronomical observation." The effects of this pollution begin with the loss of visibility and are rapidly becoming more noticeable in Seattle.

According to the Northwest section of the International Dark Sky Association (IDSA), "Until just 30 years ago, the Milky Way was visible from Seattle. Only in this very last generation of human history has that profound view been lost. Today, fully 70% of the world's population has lost contact with the night sky that had inspired awe in humans for millennia." (Attempts were made to contact members of the International Dark Sky Association for interviews, but no responses were received.)

The IDSA is an organization established in 1988, which is composed of university professors, scientists, volunteers and others around the world who are concerned about the loss of night sky views due to the urbanization of society and the use of harmful lighting. This association hopes to promote awareness about light pollution in order to reverse its harmful effects and restore natural views.

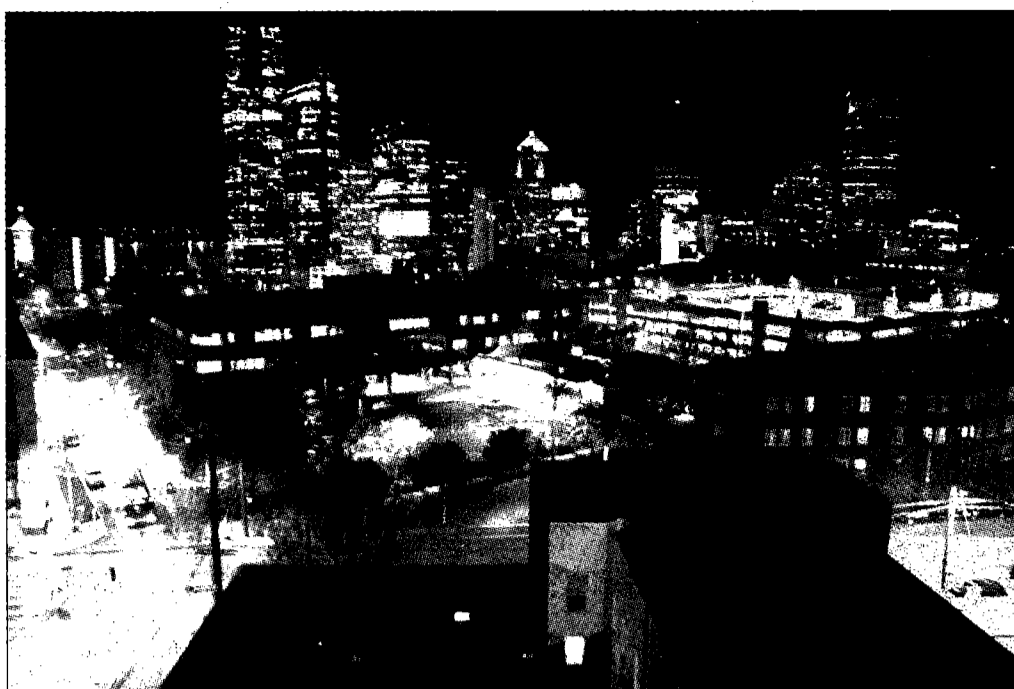
Inefficient and excessive lighting, which focuses light upward and outward, instead of on the ground where it is most needed, causes the loss of night views.

While some city-dwellers may feel that the inability to see stars in the city is unimportant, IDSA believes there are other consequences of light pollution, including a negative impact on human health and wildlife, a waste of energy and money, reduced nighttime visibility, poor nighttime ambience and the creation of unattractive communities.

This association feels that using better lighting promotes human health and a sound environment. Using light effectively will reduce costs and improve appearances by directing light only where necessary and most beneficial.

While some ignore the proposed benefits of making changes, Seattle University does not.

"Light pollution definitely matters. Having light where



Tyler Mahoney/The Spectator

The effects light pollution can cause are shown from this view of the Seattle skyline, taken from the 12th floor of Campion Hall.

you need it is more efficient and better for the environment," says Craig Birkliid, assistant director of Public Safety.

Seattle University addresses this problem by directing street lamps downward and using other lighting that prevents light pollution. However, though much of the campus is well-lit with this system, the current lighting has hot and cold spots, says Birkliid.

"We have a couple of areas where we have asked for more lighting," says Birkliid about dark campus areas.

Currently, the facilities services department is researching new lighting that would be white instead of yellow and would spread more evenly for increased safety as well as further reduce light pollution.

Finding better downward-facing lighting is another important safety feature Public Safety would like to see implemented. The paths are the least lit areas of campus and Birkliid believes people would feel much safer with good pathway lighting and it would be more efficient and less harmful to the environment. It is better for the environment because it does not disturb on-campus animal habitats or sensitive plants.

Some people agree that lighting which prevents light pollution is more efficient than traditional lighting. They also see it as beneficial for the campus.

"Anything bad for the environment you should prevent if you can, like simply making the lights face downwards instead of toward the sky," says Emily Bodmer, Bon Appetit employee.

However, students are not without reservations to the

effectiveness of new lighting.

"I think in an urban environment it's unavoidable. It's the price you pay to live in the city," says Matt Pierson, junior international studies major.

Another hindrance is Seattle's climate, with its often-cloudy sky that prevents star viewing regardless of light pollution.

However, members of International Dark Sky Northwest believe preventing light pollution is important, no matter how small the area.

This organization began small, but today in an effort to prevent and reverse light pollution, this organization also educates the public about its harmfulness, conducts research, distributes awards for good lighting and operates community programs. The IDSA believes these steps will eventually add up and bring back the view of the Milky Way that Seattle residents now miss.

Regardless of one's views of the light pollution reduction, Seattle University has already done a great deal to reduce light pollution.

The university has promoted good environmental habits by complying with many of IDSA's rules for good lighting.

These steps promote a healthier and environmentally sound campus for students and wildlife and make Seattle University an example to surrounding locations. Light pollution is preventable and reversible by being attentive to light placement and intensity.

If changes in lighting occur in local businesses and communities, Seattle will reclaim a better view of the night sky.

"Until just 30 years ago, the Milky Way was visible from Seattle. Only in this very last generation of human history has that profound view been lost."

-INTERNATIONAL DARK SKY ASSOCIATION

Environmental action across the country in preparation for Earth Day



AP Photo/Record Searchlight, Lucas Mobley

Brandon Bulmer (front left), and Joshua Cari pick litter out of rocks on the shore of Whiskeytown Lake just outside of Redding, Calif., Saturday, April 1, 2006. Saturday was the 15th annual Pick Up Litter Day at Whiskeytown National Recreation Area. It took place in preparation for Earth Day.



AP Photo/Andy Nelson-Zaleski

The Rev. Jon Magnuson (left), one of the founders of the interfaith Earth Keeper Initiative, Carl Lindquist (center), director of the Central Lake Superior Watershed Partnership, and Jennifer Simula, a graduate student at Northern Michigan University and student team project director for Earth Keepers, remove garbage from the Whetstone Brook in Marquette, Mich., Tuesday, April 11, 2006.



AP Photo/Florida Keys News Bureau, Jim Stephens

In this photo provided by the Florida Keys News Bureau, sand sculptors mingle near their creations that spelled "Keep Keys Green" Saturday, April 8, 2006, at the Cheeca Lodge in Islamorada, Fla. Participants teamed up and paid \$250 for the right to form each letter with proceeds benefiting a local treatment and rehabilitation center for indigenous wild birds. The event was the first in a series of Earth Day celebrations set to continue in the Keys through April 22.